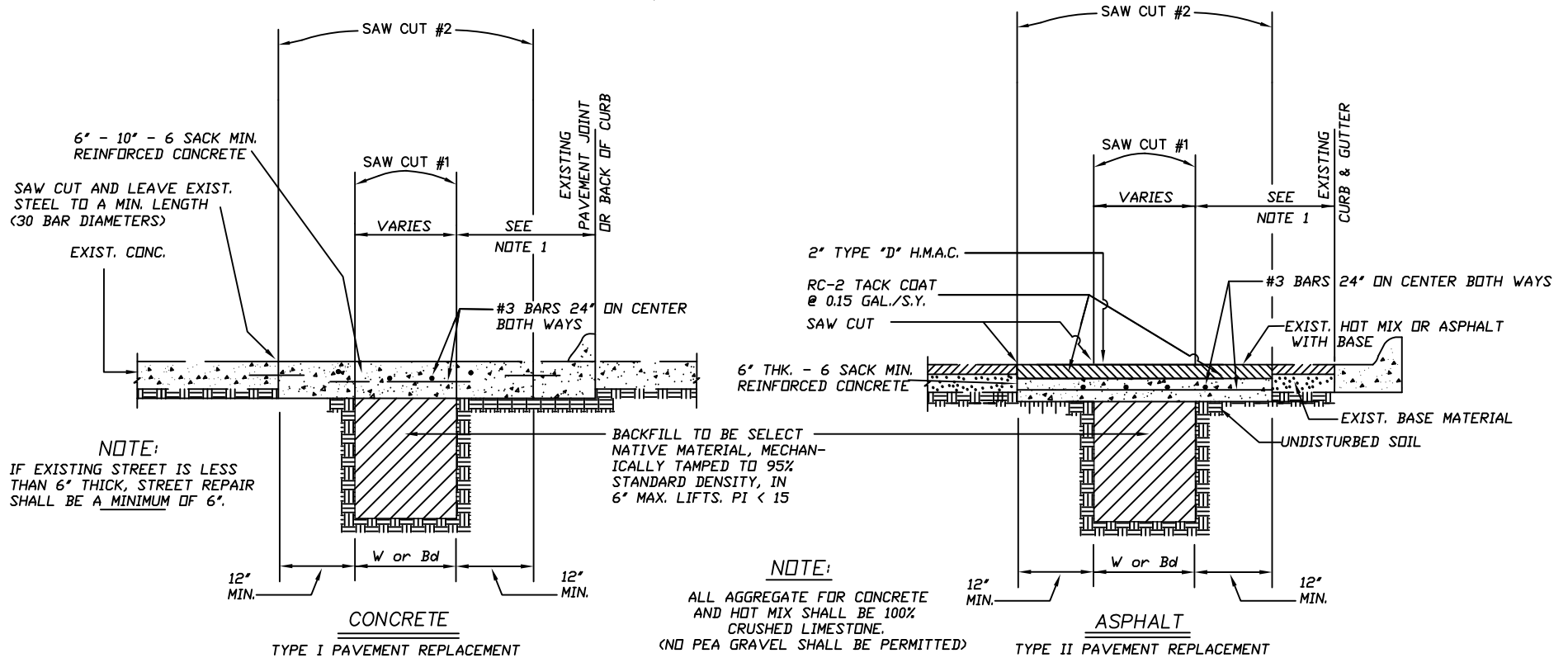


SAW CUT # 1 TO BE MADE PRIOR TO INSTALLATION OF PIPE;
 SAW CUT # 2 TO BE MADE AFTER PIPE INSTALLATION, TESTING &
 TRENCH BACK FILL COMPLETED & APPROVED. PAVEMENT CUTS
 ARE TO BE FULL DEPTH & PARALLEL WITH PROJECT ALIGNMENT.
 CUTS ARE TO BE MADE WITH POWER DRIVEN WALK-BEHIND SAW,
 MANUFACTURED FOR PURPOSE OF SAWING PAVEMENT. EDGES OF
 PAVEMENT WHICH ARE DAMAGE SUBSEQUENT TO SAW CUT # 2
 SHALL AGAIN BE SAW CUT TO NEAT STRAIGHT LINES TO REMOVE
 DAMAGE (SUCH SAW CUTS LINES SHALL BE PARALLEL TO
 ORIGINAL SAW CUT).



PAVEMENT REPLACEMENT DETAILS

NOT TO SCALE

(FOR ALL STREET CUTS-WATER, SAN/SEWER AND STORM SEWER)

NOTE 1 : IF DISTANCE BETWEEN PAVEMENT REPLACEMENT JOINT & BACK OF CURB OR EXISTING PAVEMENT JOINT IS LESS THAN 3 FOOT, LIMITS OF PAVEMENT SHALL BE TO BACK OF CURB OR EXISTING PAVEMENT JOINT.

Pavement Replacement Details

Town of Pantego

2-17-2010

SCALE
NTS

